

JAKEN

ONLINE GAMING TERMINAL

New compact A4 scanner terminal for various applications, incorporating all the latest MODULAR technologies to provide the best quality and the highest reliability. This low maintenance terminal can be configured with numerous options enabling game operators to adapt their terminal configurations as their requirements change overtime.



Rear view

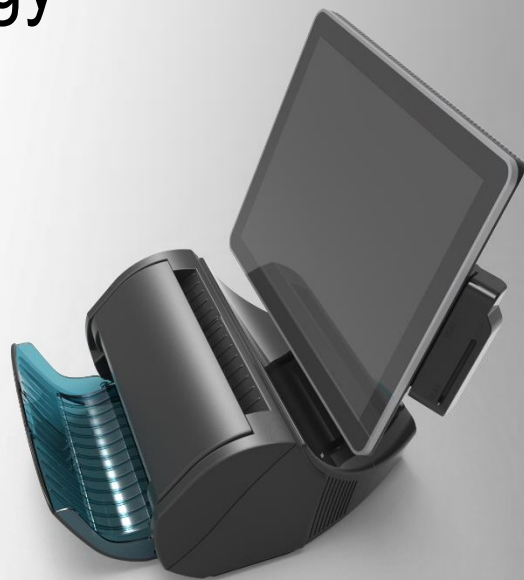


Ergonomic and
Convenient A4
Scanner Based
Online Gaming
Terminal

State of the Art Technology

JAKEN A4 scanner based terminal is made of industrial components to offer long life expectancy and durability. The display with adjustable view angle ensures operating convenience. Various I/O ports make the model compatible with numerous devices.

JAKEN can be delivered with a variety of peripherals including customer displays; gun type or integrated bar code scanner, MSR, ICR etc..



Convenient I/O



PCAP Touch



Easy Maintenance

Hardware Specification

Main Unit

CPU :	Intel J1900 1.9Ghz (burst up to 2.4Ghzs)	MSR(Optional) :	Standard RS232 Interface protocol
Memory :	4GB	IC Card Reader(Optional) :	PC/SC type
Storage :	m SATA SSD 64GB	Second display (Option) :	9.7" (1024X768), or 10.1"(1024x600) or 15" (1024x768)second display. 15" Cap touch, Audio, 2D BCR
Monitor :	15" (1024x768), 300 cd/m2		
Monitor Resolution :	1024X768		
Touch Screen :	Capacitive multi point touch screen	WLAN(Optional) :	802.1 a/b/g/n
Power Supply :	199W, 24V 8.3A. Power Adapter	I/O port : 1 x VGA, 1 X HDMI, 1 X LAN, 4 X USB2.0, 6 (COM1~3 RJ-45 , Full Signal with 5V/12V Power Output set BIOS), (COM4~6 internal Full Signal, 5V/12V Power Output set jumper) Reserved for IC_MSR/Cash Drawer Port) 24V Power Out	

A4 Scanner

Scan Tech :	CIS Double Illumination	Stacker :	Up to 10 slips
Resolution :	200 dpi (Option : 300 dpi)	Output Format :	Bmp, tif, jpg, raw
Scan Width :	A4 size document	Interface :	USB2.0
Speed	580mm/sec(Option : 820mm/sec)	Mark Recognition SDK :	STARSCAN [®] SDK Predefined Data Marks, 1D, 2D Barcode reading capability Slip Identification & Configuration
LED light :	660nm Red LED		
Light distribution :	Uniform on entire A5 size	Power Requirement :	Normal : +24V DC 2.7A Branding(Optional) : +24 VDC +/-5% @2.7A

* 1" Brander (Option)

Contact : Witek System Inc. (South Korea) 104-601, SK Ventium bldg, Dangjung-dong, 166 Gosan-ro, Gunpo-si, Gyeonggi-do, South Korea
Tel : +82 31 454 5960 Fax : +82 31 454 4086 Email : sales@witek.co.kr